

Welcome to Strouds Run State Park Bridle Trails



There are more than 20 miles of bridle trails at Strouds Run State Park. These trails are maintained by the Athens County Chapter of the Ohio Horsemen's Council. Contact 740-448-2555 for comments on the trail conditions or to volunteer.

It is important to note that a separate mountain bike trail traverses the bridle trails and crosses the trail at 5 intersections. All users proceed with extreme caution through these crossings.

Bridle trails are marked with orange blazes and intersections are marked with numbers. The marking system is as follows: One orange blaze to indicate the trail. Two blazes to indicate a turn in the trail. Three blazes symbolize a junction of different trails. Please refer to map for numbers of junctions.

Overnight primitive camping is permitted however there is no water for either horses or people and no facilities or restrooms.

For more information or to volunteer to help maintain the trails contact: Randy Wachter at Burr Oak State Park 740-767-3570.

Trail Guidelines

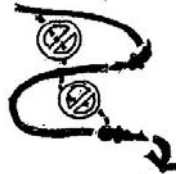
- Horses and mountain bikers must stay on their designated trails.
- Do not ride on the Lake View Trail past the Dam or the Beach.
- The Lake View Trail is a multi-use trail with hikers and bikers yielding to horses and bikers yielding to hikers.

Bridle Trails

- 6 mi. Pete Smith Loop
- 4 mi. Boogie Loop
- 3 mi. Cliff Trail Loop
- 2 mi. Creek Trail
- 2 mi. Hermits Hut Trail
- 2 mi. Haley and Hank Loop
- 1 mi. Indian Mound Trail
- 1 mi. Amoretto Trail



*KEEP HORSES
TO INSIDE OF
HILLSIDE TRAILS*



*STAY ON TRAILS
PLEASE DO NOT
SHORT CUT
TRAIL LOOPS*



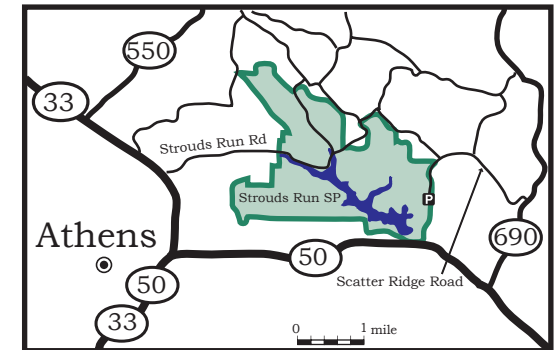
*AVOID RIDING
IN WET & MUDDY
AREAS*

Emergency Numbers

Dial 911 for emergency medical and Sheriff Assistance.

Directions to the Trail Head

- Travel 4 mi. east of Athens on US 50/32 and turn left on SR 690.
- Travel 1 ½ mi. and turn left on Scatter Ridge Rd.
- Travel 2 miles and turn left on Lake Hill Rd.
- Travel 1 mile to the Trail Head.



GPS Coordinates For Trail Intersections

- 1) N39.347469 W82.012126
- 2) N39.349029 W82.015639
- 3) N39.347507 W82.021855
- 4) N39.347794 W82.022069
- 5) N39.351290 W82.022304
- 6) N39.354102 W82.021038
- 7) N39.358977 W82.025649
- 8) N39.357375 W82.027684
- 9) N39.352290 W82.028764
- 10) N39.352441 W82.027405
- 11) N39.352148 W82.023927
- 12) N39.347788 W82.022464
- 13) N39.349124 W82.023959
- 14) N39.347063 W82.012242
- 15) N39.345165 W82.011706
- 16) N39.340714 W82.011842
- 17) N39.336653 W82.015592
- 18) N39.339821 W82.016339
- 19) N39.341424 W82.017437
- 20) N39.356301 W82.026644

Trail data collected by GPS October '06. Base data for map from Athens County GIS. Cartography by Kevin S. Fox, Geography Dept., OU.